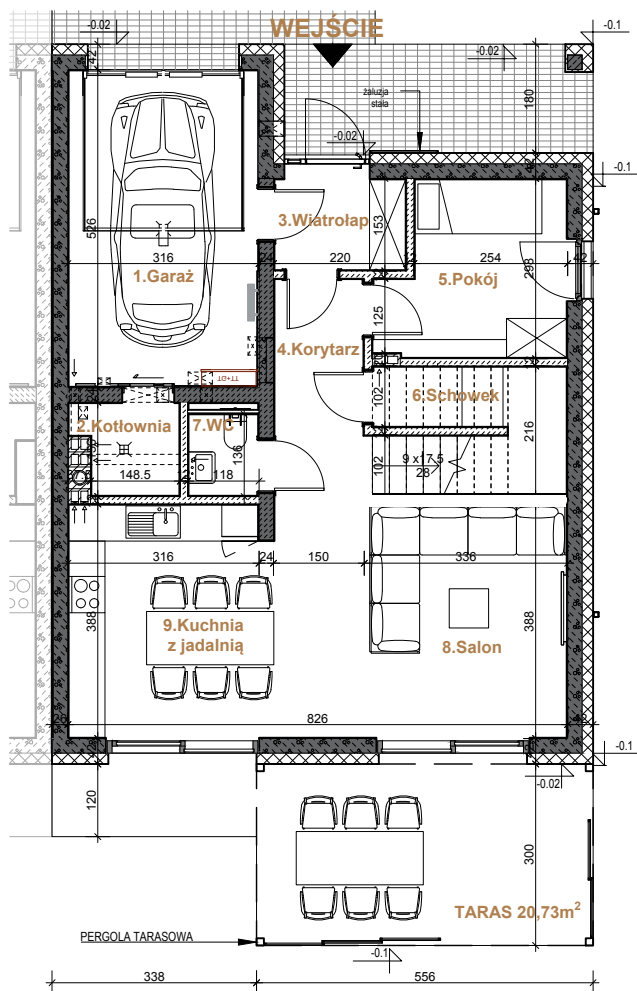
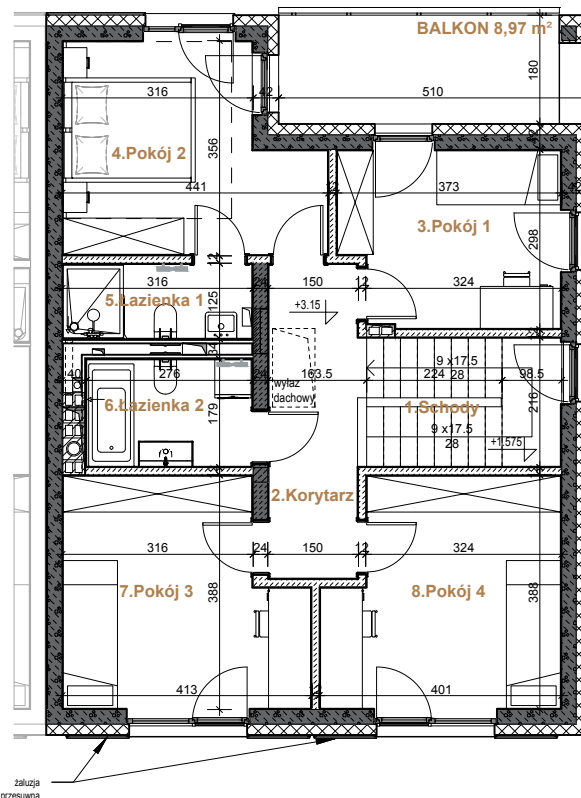


PARTER



PIĘTRO



DOM B6 / 144,91 m²
DZIAŁKA 355 m²

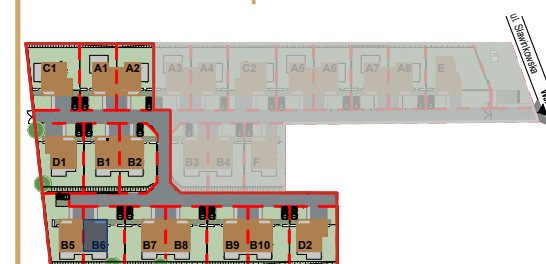
PARTER | 70,32 m²

| | | |
|-------|--------------------|----------------------|
| 1 | Garaż | 16.32 m ² |
| 2 | Kotłownia | 2.43 m ² |
| 3 | Wiatrolap | 3.26 m ² |
| 4 | Korytarz | 5.48 m ² |
| 5 | Pokój | 8.28 m ² |
| 6 | Schówek | 1.47 m ² |
| 7 | WC | 1.55 m ² |
| 8 | Salon | 18.60 m ² |
| 9 | Kuchnia z jadalnią | 12.93 m ² |
| Taras | | 20.73 m ² |



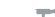

PIĘTRO | 74,59 m²

| | | |
|--------|------------|----------------------|
| 1 | Schody | 6.81 m ² |
| 2 | Korytarz | 7.65 m ² |
| 3 | Pokój 1 | 10.29 m ² |
| 4 | Pokój 2 | 13.21 m ² |
| 5 | Łazienka 1 | 3.87 m ² |
| 6 | Łazienka 2 | 4.87 m ² |
| 7 | Pokój 3 | 13.99 m ² |
| 8 | Pokój 4 | 13.90 m ² |
| Balkon | | 8.97 m ² |

Plan Osiedla | SŁAWINKOWSKA

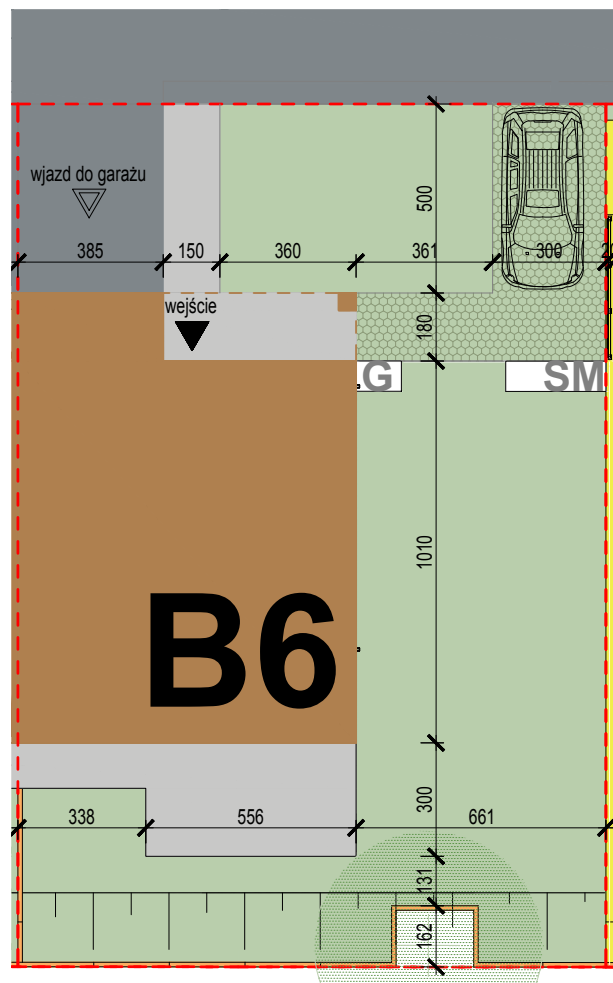


LEGENDA:

-  ŚCIANY KONSTRUKCYJNE
-  GRZEJNIK PŁYTOWY KOMPAKTOWY
-  GRZEJNIK DRABINKOWY ŁAZIENKOWY
-  TD-TT
TABLICA ELEKTRYCZNA



www.twojaslawinkowska.pl



Plan Osiedla | SŁAWINKOWSKA

